

BOARD CLASS 10TH

HOW DO ORGANISMS REPRODUCE ?

PRACTICE SHEET

(Question No.1 to 6 – 2 Marks Each)

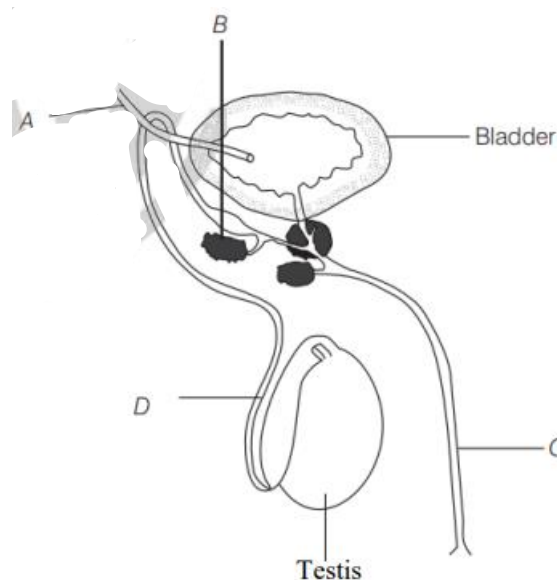
1. What is the importance of DNA copying in reproduction?
2. List two advantages of vegetative propagation over modes of reproduction.
3. In tobacco plants, the male gametes have twenty four chromosomes. What is the number of chromosomes in the female gamete ? What is the number of chromosomes in the Zygote?
4. Why cannot fertilization take place in flowers if pollination does not occur?
5. How does the embryo get nourishment inside the mother's body?
6. If woman is using a copper-T, will it help in protecting her from sexually transmitted diseases?

(Question No.7 to 9 – 3 Marks Each)

7. Write one main difference between asexual and sexual mode of reproduction. Which species is likely to have comparatively better chances of survival, the one reproducing asexually or the one reproducing sexually?
Give reason to justify your answer.
8. (i.) Name the mode of reproduction of the following organisms and state the important feature of each mode
(a) *Planaria* (b) *Hydra* (c) *Rhizopus*
(ii.) We can develop new plants from the leaves of *Bryophyllum*. Comment.
9. Define pollination. Explain the different types of pollination. List two agents of pollination. How does suitable pollination lead to fertilisation?

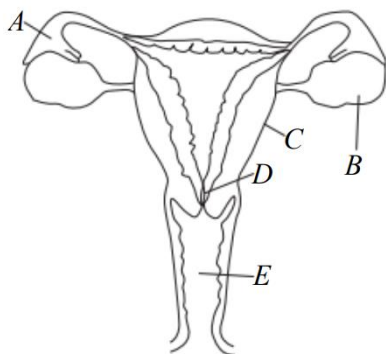
(Question No.10 to 15 – 4 Marks Each)

10. (i.) Draw a diagram showing germination of pollen on stigma of a flower and mark on it the following organs/parts
(a) Pollen grain (b) Pollen tube (c) Stigma (d) Female germ cell
11. Trace the change that takes place in a flower from gamete formation to fruit formation.
12. Based on the given diagram answer the questions given below



- (i) Label the parts A, B, C and D.
- (ii) Name the hormone secreted by testis and mention its role.
- (iii) State the functions of B and C in the process of reproduction.

13. (i) Identify the given diagram. Name the parts labelled as A to E.



- (ii) What is contraception? List three advantages of adopting contraceptive measures.

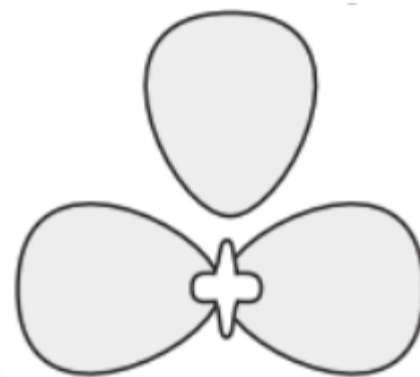
14. Give reasons.

- (i) Placenta is extremely essential for foetal development.
- (ii) Blocking of vas deferens prevents pregnancy.
- (iii) Wind acts as a pollinating agent
- (iv) Use of condoms prevents pregnancy.

15. Read the following and answer the questions from (i) to (v) given below

Salman soaked a few seeds of Bengal gram (chana) and kept them overnight. Next morning, he drained the excess water and covered seeds with a wet cloth. He then left the seeds for a day.

After one day, he opened the seeds into two parts and carefully observed the different parts.



- (i.) Which part of the flower develops into seed?
- (ii.) Where do the energy required for germination of seeds come from?
- (iii.) Which part of the seed emerges out the first?
- (iv.) Define germination.
- (v.) What are the necessary conditions for seed germination?